

tr tr

f(p)

tr tr

tr tr

tr tr

tr
f p

f

39

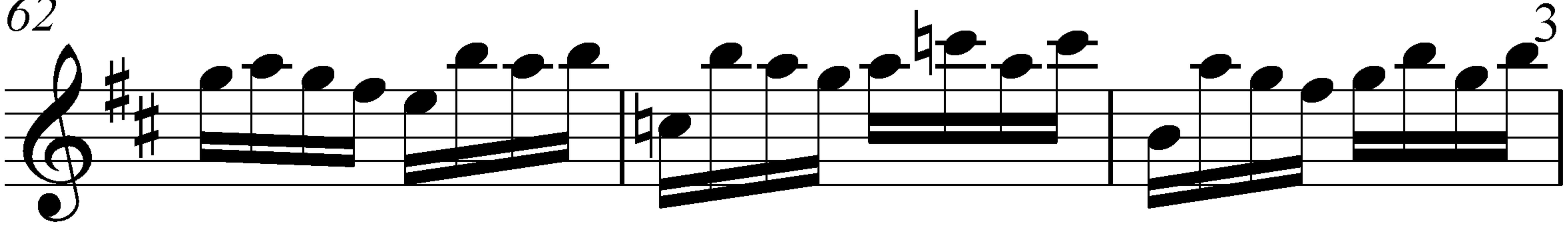
44
f p

49
f tr

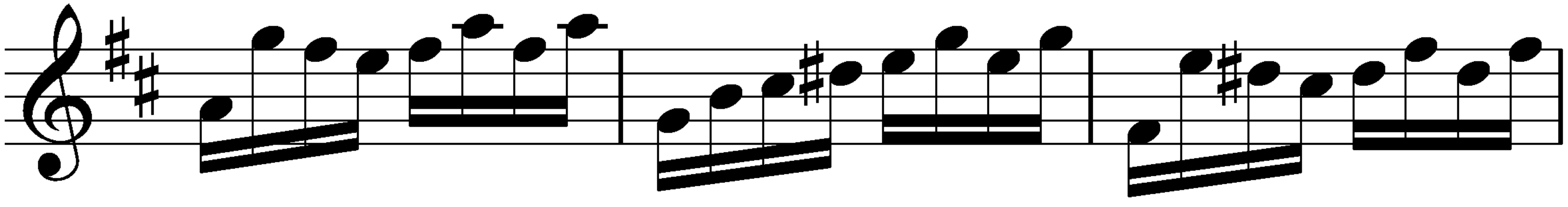
54
tr

59

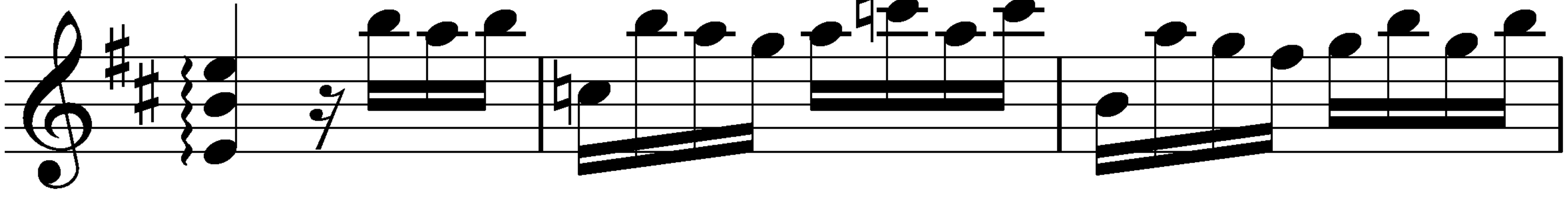
62



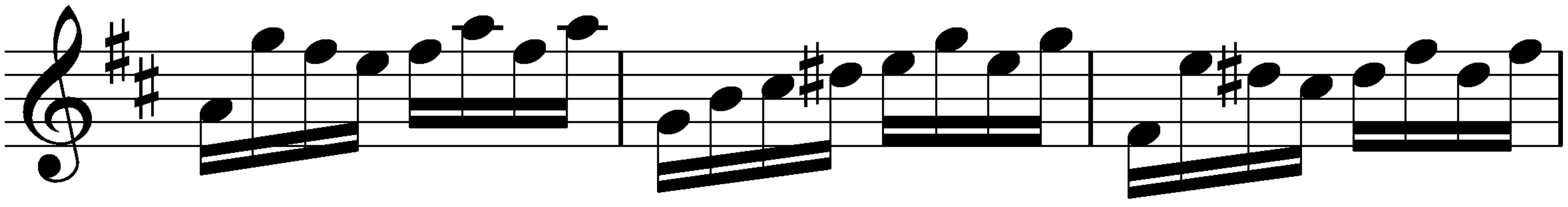
65



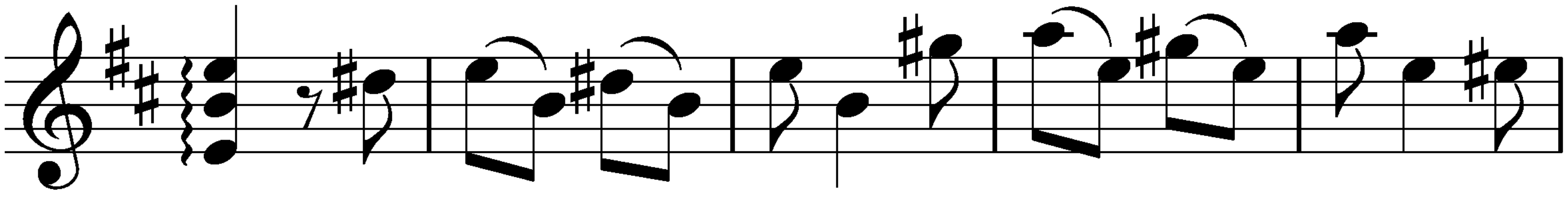
68



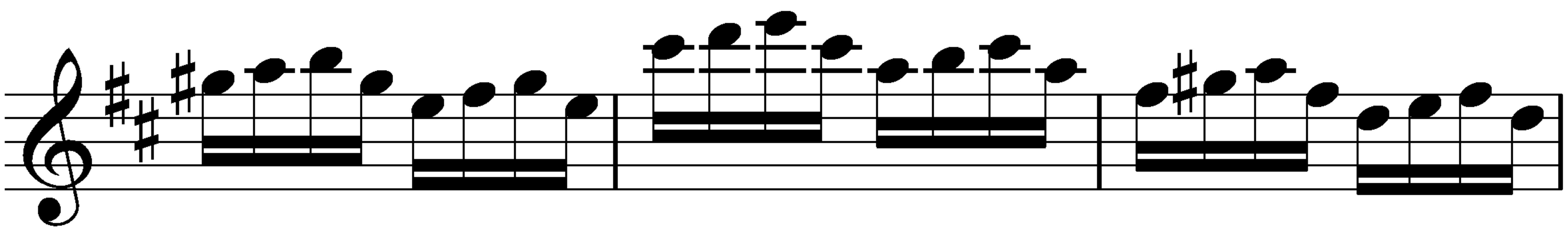
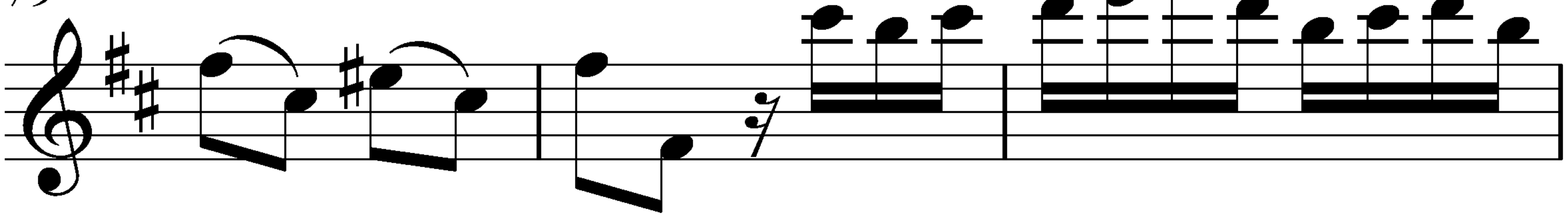
71



74



79



First musical staff in treble clef with two sharps (F# and C#). The melody consists of eighth notes with slurs, featuring a sequence of notes: D5, E5, F#5, G5, A5, B5, C6, B5, A5, G5, F#5, E5, D5. The first two measures have a repeat sign over the notes.

Second musical staff in treble clef with two sharps. The melody consists of eighth notes with slurs, featuring a sequence of notes: D5, E5, F#5, G5, A5, B5, C6, B5, A5, G5, F#5, E5, D5. The first two measures have a repeat sign over the notes.

Third musical staff in treble clef with two sharps. The melody consists of eighth notes with slurs, featuring a sequence of notes: D5, E5, F#5, G5, A5, B5, C6, B5, A5, G5, F#5, E5, D5. The first two measures have a repeat sign over the notes.

Fourth musical staff in treble clef with two sharps. The melody consists of eighth notes with slurs, featuring a sequence of notes: D5, E5, F#5, G5, A5, B5, C6, B5, A5, G5, F#5, E5, D5. The first two measures have a repeat sign over the notes. Dynamics *f* and *p* are marked below the staff.

Fifth musical staff in treble clef with two sharps. The melody consists of eighth notes with slurs, featuring a sequence of notes: D5, E5, F#5, G5, A5, B5, C6, B5, A5, G5, F#5, E5, D5. The first two measures have a repeat sign over the notes. Dynamics *f* is marked below the staff.

Sixth musical staff in treble clef with two sharps. The melody consists of eighth notes with slurs, featuring a sequence of notes: D5, E5, F#5, G5, A5, B5, C6, B5, A5, G5, F#5, E5, D5. The first two measures have a repeat sign over the notes. Trills (*tr*) are marked above the first and third measures.

Seventh musical staff in treble clef with two sharps. The melody consists of eighth notes with slurs, featuring a sequence of notes: D5, E5, F#5, G5, A5, B5, C6, B5, A5, G5, F#5, E5, D5. The first two measures have a repeat sign over the notes. Trills (*tr*) are marked above the first and third measures.